

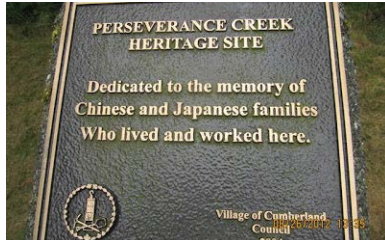


Village of Cumberland Heritage Management Plan

Volume 2 Heritage Register

Natural Features

1



CREEKS (Perseverance, Morrison, Roy, Mallard, and Piercy Creeks)

Values	Theme	Resource Type / Description
<ul style="list-style-type: none"> Ecologically valuable as part of watershed, and associated flora and fauna Social value for history as recreational resource for the region 	<ul style="list-style-type: none"> Land of Plenty Quiet Life, Active Pursuits 	<ul style="list-style-type: none"> Natural features

2



LAKES (Maple Lake, Allen Lake)

Values	Theme	Resource Type / Description
<ul style="list-style-type: none"> Ecologically valuable as part of watershed, and associated flora and fauna Social value for history as recreational resource for the region 	<ul style="list-style-type: none"> Land of Plenty Quiet Life, Active Pursuits 	<ul style="list-style-type: none"> Natural features

3



COMOX LAKE

Values	Theme	Resource Type / Description
<ul style="list-style-type: none"> Ecologically valuable as part of watershed, and associated flora and fauna Reservoir for Cumberland Social value for history as recreational resource for the region 	<ul style="list-style-type: none"> Land of Plenty Quiet Life, Active Pursuits 	<ul style="list-style-type: none"> Natural feature

4



**WILDLIFE
(Bear, cougar)**

Values	Theme	Resource Type / Description
<ul style="list-style-type: none"> Valuable as part of the natural ecology Social and cultural value as part of the community's sense of being near nature 	<ul style="list-style-type: none"> Land of Plenty Quiet Life, Active Pursuits 	<ul style="list-style-type: none"> Natural resource

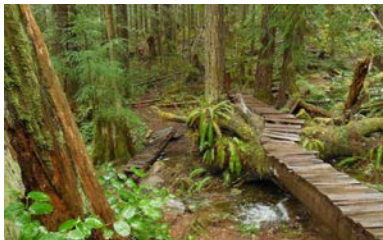
5



BEAR TRAILS

Values	Theme	Resource Type / Description
<ul style="list-style-type: none"> Valuable as part of the natural landscape Social and cultural value as sign of healthy environment 	<ul style="list-style-type: none"> Land of Plenty Quiet Life, Active Pursuits 	<ul style="list-style-type: none"> Natural resource

6



COMMUNITY FOREST AND COVENANTS

Values	Theme	Resource Type / Description
<ul style="list-style-type: none"> Forest valuable as home to indigenous flora and fauna Covenants are an important as a safeguard the community's interest in seeing the continued integrity and existence of the forest Forest contains many remnants from forest harvesting and coal mining days 	<ul style="list-style-type: none"> Land of Plenty Quiet Life, Active Pursuits Mining Coal, Cutting Wood 	<ul style="list-style-type: none"> Culturally modified natural resource

7



WETLANDS

Values	Theme	Resource Type / Description
<ul style="list-style-type: none"> · Valuable part of Cumberland ecology · Recreational resource 	<ul style="list-style-type: none"> · Land of Plenty · Quiet Life, Active Pursuits 	<ul style="list-style-type: none"> · Natural resource

8



**COAL BEACH
(No.4 MINE)**

Values	Theme	Resource Type / Description
<ul style="list-style-type: none"> · Valuable industrial landscape 	<ul style="list-style-type: none"> · Mining Coal, Cutting Wood 	<ul style="list-style-type: none"> · Industrial remains

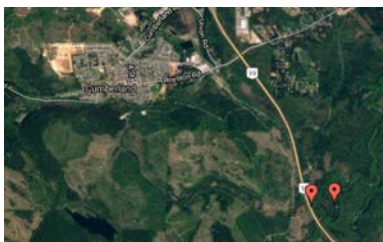
9



**FLOODPLAIN FOREST
(BEHIND JAPANESE No.1 TOWN)**

Values	Theme	Resource Type / Description
<ul style="list-style-type: none"> · Connection between No.1 Japanese Town and Chinatown · Wellington Colliery Trail 	<ul style="list-style-type: none"> · Land of Plenty · Quiet Life, Active Pursuits 	<ul style="list-style-type: none"> · Natural resource

10



ACCESS TO TRENT RIVER

Values	Theme	Resource Type / Description
<ul style="list-style-type: none"> · Valuable aspect of recreational life in Cumberland 	<ul style="list-style-type: none"> · Land of Plenty · Quiet Life, Active Pursuits 	<ul style="list-style-type: none"> · Natural resource

11



**GLACIAL LANDSCAPES
(KETTLES, ESKERS, LAKES, CREEKS)**

Values	Theme	Resource Type / Description
<ul style="list-style-type: none"> Valuable as dramatic natural history of the area 	<ul style="list-style-type: none"> Land of Plenty 	<ul style="list-style-type: none"> Natural resource

12



WETLANDS AND MARSHES

Values	Theme	Resource Type / Description
<ul style="list-style-type: none"> Ecologically valuable as part of watershed, and associated flora and fauna Social value as a distinct place of recreation 	<ul style="list-style-type: none"> Land of Plenty Quiet Life, Active Pursuits 	<ul style="list-style-type: none"> Natural resource

13



BEAUFORT MOUNTAIN RANGE

Values	Theme	Resource Type / Description
<ul style="list-style-type: none"> Ecologically valuable as part of watershed, and associated flora and fauna Social value as a distinct place of recreation 	<ul style="list-style-type: none"> Land of Plenty Quiet Life, Active Pursuits 	<ul style="list-style-type: none"> Natural resource

14



UNDERGROUND CREEKS

Values	Theme	Resource Type / Description
<ul style="list-style-type: none"> · Originating in glacial till · Headwaters of various creeks (such as Roy, Piercy, Millard, and Morrison Creeks) · Ecologically valuable as part of watershed 	<ul style="list-style-type: none"> · Land of Plenty 	<ul style="list-style-type: none"> · Natural resource

15



DARK SKIES

Values	Theme	Resource Type / Description
<ul style="list-style-type: none"> · Environmental, cultural and social value as a distinct quality of being away of night floodlighting 	<ul style="list-style-type: none"> · Land of Plenty · Quiet Life, Active Pursuits 	<ul style="list-style-type: none"> · Natural resource

16



CHINESE AND JAPANESE FOOD AND MEDICINAL PLANTS IN THE FOREST

Values	Theme	Resource Type / Description
<ul style="list-style-type: none"> · Cultural value as a physical remnant of the Chinese mining settlement history · Collecting chanterelles and pine mushrooms · e.g. Japanese medicinal plant Fuki (petasites japonica) 	<ul style="list-style-type: none"> · Land of Plenty · Quiet Life, Active Pursuits · Coal Mining, Cutting Wood 	<ul style="list-style-type: none"> · Culturally modified natural resource

17



BEAVER ECOSYSTEMS

Values	Theme	Resource Type / Description
<ul style="list-style-type: none"> · Ecologically valuable as part of watershed · Valuable ecology for flora and fauna 	<ul style="list-style-type: none"> · Land of Plenty 	<ul style="list-style-type: none"> · Natural resource

18



TREES AND SPECIMEN TREES

Values	Theme	Resource Type / Description
<ul style="list-style-type: none"> · Ecologically valuable as part of watershed · Valuable ecology for flora and fauna · Educational value as examples of native and introduced plant species 	<ul style="list-style-type: none"> · Land of Plenty · Quiet Life, Active Pursuits · Mining Coal, Cutting Wood 	<ul style="list-style-type: none"> · Natural resources

Cultural Landscape Features

19



FIRST NATIONS LAND

Values	Theme	Resource Type / Description
<ul style="list-style-type: none"> Valuable presence of First Nations in the community 	<ul style="list-style-type: none"> Land of Plenty Developing A Village 	<ul style="list-style-type: none"> Cultural resource

20



CUMBERLAND PARKS

Values	Theme	Resource Type / Description
<ul style="list-style-type: none"> Ecologically valuable as part of unbuilt landscape Valuable recreational land 	<ul style="list-style-type: none"> Land of Plenty Quiet Life, Active Pursuits Developing A Village 	<ul style="list-style-type: none"> Natural and cultural landscape resource

21



KIWANIS FISH HATCHERY

Values	Theme	Resource Type / Description
<ul style="list-style-type: none"> Ecologically valuable as part of watershed Valuable facility for chinook, chum, and other salmon species 	<ul style="list-style-type: none"> Land of Plenty Quiet Life, Active Pursuits Creating A Diverse Community 	<ul style="list-style-type: none"> Natural resource

22



COAL CREEK HISTORIC PARK

Values	Theme	Resource Type / Description
<ul style="list-style-type: none"> · Ecologically valuable as part of unbuilt landscape · Centrally important cultural site · Valuable recreational land 	<ul style="list-style-type: none"> · Land of Plenty · Quiet Life, Active Pursuits · Developing A Village · Creating A Diverse Community 	<ul style="list-style-type: none"> · Natural and cultural landscape resource

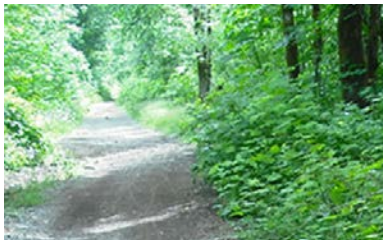
23



NO.6 MINE PARK

Values	Theme	Resource Type / Description
<ul style="list-style-type: none"> · Centrally important cultural site for Cumberland mining history · Valuable recreational land 	<ul style="list-style-type: none"> · Mining Coal, Cutting Wood · Developing A Village 	<ul style="list-style-type: none"> · Industry history resource

24



GREENWAYS

- WELLINGTON COLLIERY RAILWAY RIGHT-OF-WAY
- CHINATOWN TO No.1 JAPANESE TOWN
- ROYSTON ROAD ALONG ULVERSTON TO PEACE PARK

Values	Theme	Resource Type / Description
<ul style="list-style-type: none"> · Ecologically valuable as part of unbuilt landscape · Valuable recreational land 	<ul style="list-style-type: none"> · Quiet Life, Active Pursuits · Developing A Village 	<ul style="list-style-type: none"> · Natural and cultural landscape resource

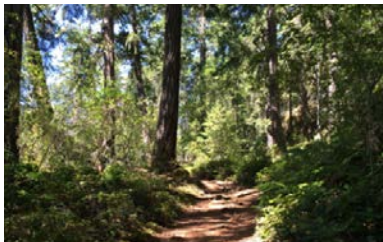
25



TRAIL CONNECTION TO UNION BAY

Values	Theme	Resource Type / Description
<ul style="list-style-type: none"> · Cultural historical corridor · Valuable recreational land 	<ul style="list-style-type: none"> · Quiet Life, Active Pursuits · Developing A Village 	<ul style="list-style-type: none"> · Natural and cultural landscape resource

26



LOGGING ROADS

Values	Theme	Resource Type / Description
<ul style="list-style-type: none"> · Cultural historical corridors · Remnants of logging history · Valuable recreational land 	<ul style="list-style-type: none"> · Land of Plenty · Quiet Life, Active Pursuits 	<ul style="list-style-type: none"> · Natural and cultural landscape resource

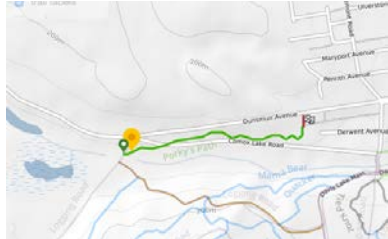
27



HUNTING AND TRAPPING TRAILS

Values	Theme	Resource Type / Description
<ul style="list-style-type: none"> · Cultural historical corridors · Remnants of early culture · Valuable recreational land 	<ul style="list-style-type: none"> · Land of Plenty · Quiet Life, Active Pursuits 	<ul style="list-style-type: none"> · Natural and cultural landscape resource

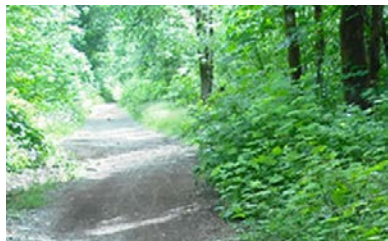
28



PORKY'S PATH

Values	Theme	Resource Type / Description
<ul style="list-style-type: none"> · Cultural historical corridor · Valuable recreational corridor 	<ul style="list-style-type: none"> · Land of Plenty · Quiet Life, Active Pursuits 	<ul style="list-style-type: none"> · Natural and cultural landscape resource

29



RAILWAY LINE REMNANTS WITHIN CUMBERLAND (BEDS, TRAILS, AND RIGHTS-OF-WAY)

Values	Theme	Resource Type / Description
<ul style="list-style-type: none"> · Cultural historical corridors · Remnants of logging history · Valuable recreational land 	<ul style="list-style-type: none"> · Land of Plenty · Quiet Life, Active Pursuits · Mining Coal, Cutting Wood · Developing A Village 	<ul style="list-style-type: none"> · Natural and cultural landscape resource

30



FIRST NATIONS TRAILS

Values	Theme	Resource Type / Description
<ul style="list-style-type: none"> · Routes (whether trails or waterways) from sea to Comox Lake via Puntledge River; also Perseverance Creek) · Part of route through to area where Port Alberni is located · Cultural historical corridors · Valuable recreational land 	<ul style="list-style-type: none"> · Land of Plenty · Creating a Diverse Community 	<ul style="list-style-type: none"> · Natural and cultural landscape resource

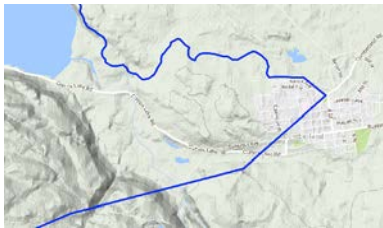
31



AIR QUALITY

Values	Theme	Resource Type / Description
<ul style="list-style-type: none"> · Environmental, cultural and social value as a distinct quality of the place 	<ul style="list-style-type: none"> · Land of Plenty · Quiet Life, Active Pursuits 	<ul style="list-style-type: none"> · Natural resource

32



VANCOUVER ISLAND SPINE TRAIL ASS'N. (VISTA) TRAIL

Values	Theme	Resource Type / Description
<ul style="list-style-type: none"> · Cultural historical corridor · Part of walking route along mountain ranges that will allow Cumberland to be a stopping point 	<ul style="list-style-type: none"> · Land of Plenty · Quiet Life, Active Pursuits 	<ul style="list-style-type: none"> · Natural and cultural landscape resource

33



COMPANY FARM (UNION ROAD)

Values	Theme	Resource Type / Description
<ul style="list-style-type: none"> · Valued as an historical landscape · Valued as a remnant of newcomer settlement · Sites where mules were rested · Later use as summer vacation site - now no longer · Present location of sewage treatment lagoons 	<ul style="list-style-type: none"> · Land of Plenty · Developing A Village 	<ul style="list-style-type: none"> · Culturally modified landscape resource

34



**URBAN AGRICULTURE
(PRIVATE GARDENS)**

Values	Theme	Resource Type / Description
<ul style="list-style-type: none"> · Ecologically valuable as part of unbuilt land · Valued as source of local food production · In some cases recollection of Chinese domestic gardening 	<ul style="list-style-type: none"> · Land of Plenty · Quiet Life, Active Pursuits 	<ul style="list-style-type: none"> · Cultural modified landscape resource

35



ORCHARDS AND ORCHARD REMNANTS

- ROTARY PARK
- CHINATOWN
- BOTTOM OF CAMP ROAD

Values	Theme	Resource Type / Description
<ul style="list-style-type: none"> · Ecologically valuable as part of unbuilt land · Remnant of historical small scale fruit production · Maintenance contribution by Rotary Club valued for community involvement 	<ul style="list-style-type: none"> · Land of Plenty · Quiet Life, Active Pursuits 	<ul style="list-style-type: none"> · Cultural modified landscape resource

36



ALLEYWAYS

Values	Theme	Resource Type / Description
<ul style="list-style-type: none"> · Valued as a culturally rich landscape in town 	<ul style="list-style-type: none"> · Quiet Life, Active Pursuits · Developing A Village 	<ul style="list-style-type: none"> · Cultural modified landscape resource

37



CHINESE AND JAPANESE CANADIAN CEMETERIES

Values	Theme	Resource Type / Description
<ul style="list-style-type: none"> · Ecologically valuable as part of unbuilt land · Centrally important cultural marker of historically diverse communities 	<ul style="list-style-type: none"> · Land of Plenty · Developing A Village · Creating a Diverse Community 	<ul style="list-style-type: none"> · Cemetery

38



WRECK SITE AT TRENT RIVER TRESTLE

Values	Theme	Resource Type / Description
<ul style="list-style-type: none"> · Remains of important event in rail history of Cumberland 	<ul style="list-style-type: none"> · Mining Coal, Cutting Wood 	<ul style="list-style-type: none"> · Industrial remains

39



**THREE CAIRNS
(ON THE ROAD TO COMOX LAKE)**

- BLACK COMMUNITY
- No.4 MINE
- CHINATOWN

Values	Theme	Resource Type / Description
<ul style="list-style-type: none"> · Commemorates historical aspects of the community 	<ul style="list-style-type: none"> · Mining Coal, Cutting Wood · Creating A Diverse Community 	<ul style="list-style-type: none"> · Cairns

40



STREET DRAINAGE DITCHES

Values	Theme	Resource Type / Description
<ul style="list-style-type: none"> · Valued for being a traditional country road feature 	<ul style="list-style-type: none"> · Developing A Village 	<ul style="list-style-type: none"> · Traditional urban landscape form

41



COAL SLAG PILES

- No.1 MINE JAPANESE TOWN
- No.2 CHINATOWN

Values	Theme	Resource Type / Description
<ul style="list-style-type: none"> • Marks the infrastructure for the transportation of coal to market 	<ul style="list-style-type: none"> • Mining Coal, Cutting Wood 	<ul style="list-style-type: none"> • Industrial remains

42

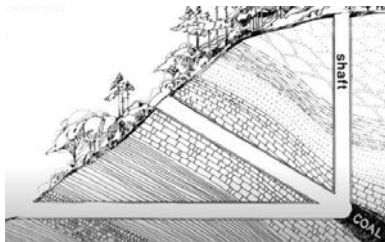


MINE SITES AND BUILDINGS IN THE FOREST

- No.4 MINE FANHOUSE AND SUBSTATION

Values	Theme	Resource Type / Description
<ul style="list-style-type: none"> • Together the sites mark the extent and geographical range of development associated with mining and development of the Cumberland region 	<ul style="list-style-type: none"> • Mining Coal, Cutting Wood • Developing A Village 	<ul style="list-style-type: none"> • Industrial remains • Remains of early settlement

43



MINING AIR SHAFTS AND TUNNELS

Values	Theme	Resource Type / Description
<ul style="list-style-type: none"> • Marks the infrastructure for the transportation of coal to market 	<ul style="list-style-type: none"> • Mining Coal, Cutting Wood 	<ul style="list-style-type: none"> • Industrial remains

44



LARGE LOTS

Values	Theme	Resource Type / Description
<ul style="list-style-type: none"> Gardened landscape contributes to the green nature of the urban landscape 	<ul style="list-style-type: none"> Developing A Village 	<ul style="list-style-type: none"> Urban landscape

45



GARDENS

Values	Theme	Resource Type / Description
<ul style="list-style-type: none"> Residential gardens are a major contributor to the character of Cumberland's residential areas 	<ul style="list-style-type: none"> Developing A Village 	<ul style="list-style-type: none"> Urban landscape

46



**HERITAGE BIKING TRAIL
(COMOX LAKE ROAD TO No.4 MINE)**

Values	Theme	Resource Type / Description
<ul style="list-style-type: none"> Part of the Wellington Colliery Railway right-of-way Incorporates trestle structure filled with coal slag Marks the development of recreational infrastructure 	<ul style="list-style-type: none"> Quiet Life, Active Pursuits Developing A Village 	<ul style="list-style-type: none"> Recreational trail

47



**CHERRY TREES
(No.1 JAPANESE TOWN)**

Values	Theme	Resource Type / Description
<ul style="list-style-type: none"> · Cultural marker of the Japanese Canadian community · Marks the historical settlement of Japanese Canadian community in No.1 Town 	<ul style="list-style-type: none"> · Quiet Life, Active Pursuits · Developing A Village · Creating A Diverse Community 	<ul style="list-style-type: none"> · Historical landscape

48



**HAWTHORN TREES
(CHINATOWN)**

Values	Theme	Resource Type / Description
<ul style="list-style-type: none"> · Memorial trees for Ron Bannerman 	<ul style="list-style-type: none"> · Quiet Life, Active Pursuits · Developing A Village · 	<ul style="list-style-type: none"> · Plant specimen

49



GRADE CHANGE ON DUNSMUIR AVENUE

Values	Theme	Resource Type / Description
<ul style="list-style-type: none"> · Grades help define distinct zones of use along street (institutional, commercial, residential) · Slope dramatizes the presence of the street 	<ul style="list-style-type: none"> · Developing A Village · Creating A Diverse Community 	<ul style="list-style-type: none"> · Urban landscape

50



VILLAGE PARK

Values	Theme	Resource Type / Description
<ul style="list-style-type: none"> · Marks the management of coal in Cumberland’s history · Encompasses all Cumberland recreation (including activities such as baseball, rugby, dog park, skate park) 	<ul style="list-style-type: none"> · Mining Coal, Cutting Wood · Developing A Village 	<ul style="list-style-type: none"> · Industrial remains

51



**URBAN VISTAS
(VIEWS FROM COAL VALLEY ESTATES AND UP
DUNSMUIR AVENUE)**

Values	Theme	Resource Type / Description
<ul style="list-style-type: none"> · Places Cumberland in its natural context · Situates the main street of the village in its physical surroundings 	<ul style="list-style-type: none"> · Quiet Life, Active Pursuits · Developing A Village 	<ul style="list-style-type: none"> · Vistas

52



MARYPORT STREETSCAPE

Values	Theme	Resource Type / Description
<ul style="list-style-type: none"> · Strong landscape that helps define the character of Cumberland · Early residential streetscape 	<ul style="list-style-type: none"> · Developing A Village 	<ul style="list-style-type: none"> · Urban landscape

Built Environment

53



DUNSMUIR STREETScape AND BUILDINGS

Values	Theme	Resource Type / Description
<ul style="list-style-type: none"> Dunsmuir streetscape and independent small business culture are major contributors to the character of Cumberland's character 	<ul style="list-style-type: none"> Quiet Life, Active Pursuits Developing A Village 	<ul style="list-style-type: none"> Urban landscape

54



COMMERCIAL BUILDINGS ON SIDE STREETS

Values	Theme	Resource Type / Description
<ul style="list-style-type: none"> Independent small business culture is a major contributor to the character of Cumberland's character 	<ul style="list-style-type: none"> Developing A Village 	<ul style="list-style-type: none"> Urban landscape

55



VILLAGE CORE OLD HOUSES

Values	Theme	Resource Type / Description
<ul style="list-style-type: none"> Old houses a major contributor to the character of the village Valuable context for Dunsmuir Avenue commercial core 	<ul style="list-style-type: none"> Developing A Village 	<ul style="list-style-type: none"> Historical building in urban landscape

56



JAPANESE MINERS' HOMES

Values	Theme	Resource Type / Description
<ul style="list-style-type: none"> No.5 Japanese Town, Maple Street, and No.1 Japanese Town Saito House, remnants of major historic mining community 	<ul style="list-style-type: none"> Developing A Village Mining Coal, Cutting Wood Creating a Diverse Community 	<ul style="list-style-type: none"> Historical building form in urban landscape

57



ILO-ILO THEATRE
2691 Dunsmuir Avenue
constructed 1914

Values	Theme	Resource Type / Description
<ul style="list-style-type: none"> Landmark on Dunsmuir Avenue Site of historic cultural events 	<ul style="list-style-type: none"> Quiet Life, Active Pursuits Developing A Village 	<ul style="list-style-type: none"> Historical building in urban landscape

58



MASONIC HALL

Values	Theme	Resource Type / Description
<ul style="list-style-type: none"> Landmark on Dunsmuir Avenue next the Ilo-Ilo Theatre Now one of the Masonic Lodges in community Remnant of old enduring Cumberland community society 	<ul style="list-style-type: none"> Quiet Life, Active Pursuits Developing A Village 	<ul style="list-style-type: none"> Historical building in urban landscape

59



JAPANESE SCHOOL

Values	Theme	Resource Type / Description
<ul style="list-style-type: none"> · Now-demolished reminder of cultural diversity of early Cumberland · School taught Japanese culture and language to Japanese Canadian students 	<ul style="list-style-type: none"> · Developing A Village · Creating a Diverse Community 	<ul style="list-style-type: none"> · Historical building in urban landscape

60



DRINKING ESTABLISHMENTS

Values	Theme	Resource Type / Description
<ul style="list-style-type: none"> · Enduring social centre for the community 	<ul style="list-style-type: none"> · Developing A Village · Creating a Diverse Community 	<ul style="list-style-type: none"> · Historical building in urban landscape

61



ROYAL CANADIAN LEGION AND LEGION ARCH



Original Legion behind enduring arch

Values	Theme	Resource Type / Description
<ul style="list-style-type: none"> · Remnant of early community institution · Arch voluntarily designated as a heritage resource 	<ul style="list-style-type: none"> · Developing A Village 	<ul style="list-style-type: none"> · Historical structure in urban landscape

62



NO.1 MINE

Values	Theme	Resource Type / Description
<ul style="list-style-type: none"> · Landscape is a reminder of the origins of Cumberland's economy 	<ul style="list-style-type: none"> · Mining Coal, Cutting Wood · Developing A Village 	<ul style="list-style-type: none"> · Industrial remains

63



**NO.5 MINE FAN HOUSE
Coal Valley Estates**

Values	Theme	Resource Type / Description
<ul style="list-style-type: none"> · Landscape is a reminder of the origins of Cumberland's economy · Rare artifact of coal mining 	<ul style="list-style-type: none"> · Mining Coal, Cutting Wood · Developing A Village 	<ul style="list-style-type: none"> · Industrial remains

64



**SCOTTS SLOPE ORIGINAL PORTAL AND SWITCH ROOM
c. 1930s**

Values	Theme	Resource Type / Description
<ul style="list-style-type: none"> · Extension of #4 Mine slope · Accessed by narrow gauge railway trestle · Landscape is a reminder of the origins of Cumberland's economy · Rare artifact of coal mining 	<ul style="list-style-type: none"> · Mining Coal, Cutting Wood · Developing A Village 	<ul style="list-style-type: none"> · Industrial remains

65



TRENT RIVER TRESTLE

Values	Theme	Resource Type / Description
<ul style="list-style-type: none"> · Replacement trestle (not in original location) for recent use by EN Railway · Recalls historical rail infrastructure 	<ul style="list-style-type: none"> · Mining Coal, Cutting Wood 	<ul style="list-style-type: none"> · Industrial infrastructure

66



ABBAY CHURCH

Values	Theme	Resource Type / Description
<ul style="list-style-type: none"> · Community institution as performing arts centre · Landmark - was a Catholic Church 	<ul style="list-style-type: none"> · Developing A Village · Creating a Diverse Community 	<ul style="list-style-type: none"> · Historical building in urban landscape

67



CUMBERLAND UNITED CHURCH

Values	Theme	Resource Type / Description
<ul style="list-style-type: none"> · Community institution · Landmark 	<ul style="list-style-type: none"> · Developing A Village · Creating a Diverse Community · 	<ul style="list-style-type: none"> · Historical building in urban landscape

68



MAROCCHI BUILDING

Values	Theme	Resource Type / Description
<ul style="list-style-type: none"> · Landmark · Associated with the Italian community · Recent adaptive re-use with restoration of heritage elements 	<ul style="list-style-type: none"> · Developing A Village · Creating a Diverse Community 	<ul style="list-style-type: none"> · Historical building in urban landscape

69



KING GEORGE HOTEL

Values	Theme	Resource Type / Description
<ul style="list-style-type: none"> · Landmark 	<ul style="list-style-type: none"> · Developing A Village 	<ul style="list-style-type: none"> · Historical building in urban landscape

70



ROYSTON LUMBER CO. SAWMILL SITE

Values	Theme	Resource Type / Description
<ul style="list-style-type: none"> · Reminder of the roots of Cumberland's economy being partly in the production of lumber · History of belonging to Japanese consortium · Once site of Walker's Scrap Metal · At present with Japanese temple building 	<ul style="list-style-type: none"> · Mining Coal, Cutting Wood · Developing A Village · Creating a Diverse Community 	<ul style="list-style-type: none"> · Industrial remnants

71



c. 1960s HOUSES

Values	Theme	Resource Type / Description
<ul style="list-style-type: none"> Record of postwar Village expansion 	<ul style="list-style-type: none"> Developing A Village 	<ul style="list-style-type: none"> Urban landscape

72



LIQUOR STORE

Values	Theme	Resource Type / Description
<ul style="list-style-type: none"> Front facade brick facing from Union Bay coke ovens 	<ul style="list-style-type: none"> Developing A Village 	<ul style="list-style-type: none"> Historical building material

73

WAVERLEY HOTEL



	Theme	Resource Type / Description
<ul style="list-style-type: none"> Part of collection of early buildings on Dunsmuir Avenue that establish Cumberland's unique character Community gathering place 	<ul style="list-style-type: none"> Developing A Village 	<ul style="list-style-type: none"> Historical building in urban landscape

74



JAPANESE TEMPLE

Values	Theme	Resource Type / Description
<ul style="list-style-type: none"> Historical evidence of early Japanese Canadian presence in Cumberland 	<ul style="list-style-type: none"> Developing A Village Creating a Diverse Community 	<ul style="list-style-type: none"> Historical building in urban landscape

75



OLD SCHOOL

Values	Theme	Resource Type / Description
<ul style="list-style-type: none"> Historic Beaufort Avenue site Site of early substantial community institution 	<ul style="list-style-type: none"> Developing A Village 	<ul style="list-style-type: none"> Historical building in urban landscape

76



**BICKLE HOUSE
2750 DUNSMUIR AVENUE**

Values	Theme	Resource Type / Description
<ul style="list-style-type: none"> Landmark Example of early residential development of consequence 	<ul style="list-style-type: none"> Developing A Village 	<ul style="list-style-type: none"> Historical house in urban landscape

77



BRIDES' HOUSES

Values	Theme	Resource Type / Description
<ul style="list-style-type: none"> · Unique starter homes in old Cumberland neighbourhoods, usually at back of properties · Contributor to unique character of older neighbourhoods · Valuable cultural history 	<ul style="list-style-type: none"> · Developing A Village 	<ul style="list-style-type: none"> · Historical building form in urban landscape

78



BEVAN HOMES



Values	Theme	Resource Type / Description
<ul style="list-style-type: none"> · Unique for story of relocation (by rail) of houses from Bevan to Cumberland as economy of region shifted 	<ul style="list-style-type: none"> · Developing A Village 	<ul style="list-style-type: none"> · Historical buildings in urban landscape

79



SAITO HOUSE

Values	Theme	Resource Type / Description
<ul style="list-style-type: none"> · Rare surviving home from the historical Japanese Canadian settlement at No.1 Japanese Town in Cumberland · Excellent example of the typical residential design · Unique tenure (house without property) related to land ownership practices by forestry companies 	<ul style="list-style-type: none"> · Developing A Village · Creating a Diverse Community 	<ul style="list-style-type: none"> · Historical building in now-rural landscape

80



THE BIG STORE

Values	Theme	Resource Type / Description
<ul style="list-style-type: none"> · Landmark · Major contributor to the character of Cumberland's Dunsmuir Avenue 	<ul style="list-style-type: none"> · Developing A Village 	<ul style="list-style-type: none"> · Historical building in urban landscape

81



MUNICIPAL HALL

Values	Theme	Resource Type / Description
<ul style="list-style-type: none"> · Presence of Village of Cumberland government on central village street · Historical government site 	<ul style="list-style-type: none"> · Developing A Village · Governing Change 	<ul style="list-style-type: none"> · Urban landscape

82



TARBELL'S

Values	Theme	Resource Type / Description
<ul style="list-style-type: none"> · Landmark · Contributor to the character of Cumberland's Dunsmuir Avenue · Contemporary commercial vitality 	<ul style="list-style-type: none"> · Developing A Village 	<ul style="list-style-type: none"> · Historical building in urban landscape

83



MINING CART BENCHES

Values	Theme	Resource Type / Description
<ul style="list-style-type: none"> · Presence of historical mining artifacts unique to Cumberland 	<ul style="list-style-type: none"> · Developing A Village 	<ul style="list-style-type: none"> · Urban landscape feature

84



COMMUNITY SCHOOL

Values	Theme	Resource Type / Description
<ul style="list-style-type: none"> · Community institution 	<ul style="list-style-type: none"> · Developing A Village 	<ul style="list-style-type: none"> · Community institution in urban landscape

85



CUMBERLAND RECREATION CENTRE AND BIG GYM

Values	Theme	Resource Type / Description
<ul style="list-style-type: none"> · Landmark · Historic place of community activities 	<ul style="list-style-type: none"> · Developing A Village 	<ul style="list-style-type: none"> · Historical building in urban landscape

86



CHARACTER BUILDINGS

Values	Theme	Resource Type / Description
<ul style="list-style-type: none"> · Old buildings of character along Dunsmuir are a major contributor to the character of Cumberland 	<ul style="list-style-type: none"> · Developing A Village 	<ul style="list-style-type: none"> · Historical buildings in urban landscape

87



RIDING FOOL HOSTEL

Values	Theme	Resource Type / Description
<ul style="list-style-type: none"> · Landmark · Adaptive re-use to serve today's economic opportunities 	<ul style="list-style-type: none"> · Developing A Village · Quiet Life, Active Pursuits 	<ul style="list-style-type: none"> · Historical building in urban landscape

88



OLD ROYAL BANK

Values	Theme	Resource Type / Description
<ul style="list-style-type: none"> · Enduring landmark · Adaptive re-use 	<ul style="list-style-type: none"> · Developing A Village 	<ul style="list-style-type: none"> · Historical building in urban landscape

89



DUNSMUIR STREETScape AND BUILDINGS

Values	Theme	Resource Type / Description
<ul style="list-style-type: none"> Streetscape is a major contributor to the character of Cumberland 	<ul style="list-style-type: none"> Developing A Village 	<ul style="list-style-type: none"> Urban landscape

90



OLD POST OFFICE

Values	Theme	Resource Type / Description
<ul style="list-style-type: none"> Landmark Adaptive re-use to suit changing economy of Cumberland 	<ul style="list-style-type: none"> Developing A Village 	<ul style="list-style-type: none"> Historical building in urban landscape

91



WILLARD BLOCK

Values	Theme	Resource Type / Description
<ul style="list-style-type: none"> Demolished landmark (now site of Rider's Pizza) Once location of studio of important local photographer Taki Matsubuchi 	<ul style="list-style-type: none"> Developing A Village Creating a Diverse Community 	<ul style="list-style-type: none"> Historical building in urban landscape

92



**HOMES OF THE PIONEER WORKING CLASS
(CAMP ROAD)**

Values	Theme	Resource Type / Description
<ul style="list-style-type: none"> · Connects present to past history of Cumberland, and the residential life of workers in the early village · Early residential neighbourhood with unique character 	<ul style="list-style-type: none"> · Developing A Village 	<ul style="list-style-type: none"> · Historical buildings in urban landscape

93



JUMBO'S CABIN

Values	Theme	Resource Type / Description
<ul style="list-style-type: none"> · Last remaining structure from Chinatown · Once also functioned as jail 	<ul style="list-style-type: none"> · Developing A Village · Creating a Diverse Community 	<ul style="list-style-type: none"> · Historical building in rural landscape

Areas, Districts and Communities

94



**UNION TOWNSITE
1889**

Values	Theme	Resource Type / Description
<ul style="list-style-type: none"> Original settlement, associated with the earliest coal mines in the Cumberland area Union (est. 1889) and Cumberland (est. 1893) were 	<ul style="list-style-type: none"> Developing A Village 	<ul style="list-style-type: none"> Urban landscape

95



CHINATOWN

Values	Theme	Resource Type / Description
<ul style="list-style-type: none"> Reminder of the presence of sizable Chinese population in early Cumberland Recorder of the segregation and connections between ethnic populations 	<ul style="list-style-type: none"> Developing A Village Creating a Diverse Community 	<ul style="list-style-type: none"> Urban landscape

96



**No.1 JAPANESE TOWN
COAL CREEK PARK**

Values	Theme	Resource Type / Description
<ul style="list-style-type: none"> Reminder of the presence of sizable Japanese Canadian population in early Cumberland Recorder of the segregation and connections between ethnic populations 	<ul style="list-style-type: none"> Developing A Village Creating a Diverse Community 	<ul style="list-style-type: none"> Urban landscape

97



BLACK COMMUNITY AND OLD HOUSE SITES

Values	Theme	Resource Type / Description
<ul style="list-style-type: none"> · Reminder of the presence of sizable Black population in early Cumberland · Recorder of the segregation and connections between ethnic populations 	<ul style="list-style-type: none"> · Developing A Village · Creating a Diverse Community 	<ul style="list-style-type: none"> · Urban landscape

98



ITALIAN AND EASTERN EUROPEAN NEIGHBOURHOODS (UNION CAMP)

Values	Theme	Resource Type / Description
<ul style="list-style-type: none"> · Marks settlement of Italians at Union Camp. · Recorder of the hierarchy of settlements between historic ethnic populations 	<ul style="list-style-type: none"> · Developing A Village · Creating a Diverse Community 	<ul style="list-style-type: none"> · Urban landscape

99



MAPLE TOWNSITE No.5 JAPANESE TOWN

Values	Theme	Resource Type / Description
<ul style="list-style-type: none"> · Valuable to the history of beginning of newcomer settlements in the Cumberland area 	<ul style="list-style-type: none"> · Developing A Village 	<ul style="list-style-type: none"> · Urban landscape

100



CAMP ROAD STREETScape, HOUSES AND PROPERTIES

Values	Theme	Resource Type / Description
<ul style="list-style-type: none"> · Unique relationship between street and houses · Repetitive house form · Location bridging between Dunsmuir Avenue and original mining sites and miner neighbourhoods 	<ul style="list-style-type: none"> · Developing A Village 	<ul style="list-style-type: none"> · Historical urban landscape

101



**UNIQUE STREET PATTERNS OF EGREMONT SUBDIVISION
c. 1980s**

Values	Theme	Resource Type / Description
<ul style="list-style-type: none"> · Unique to Cumberland · Displays recent development of the community 	<ul style="list-style-type: none"> · Developing A Village 	<ul style="list-style-type: none"> · Urban landscape

102



COTTAGE COMMUNITY, COMOX LAKE

Values	Theme	Resource Type / Description
<ul style="list-style-type: none"> · Historic recreational landscape 	<ul style="list-style-type: none"> · Quiet Life, Active Pursuits 	<ul style="list-style-type: none"> · Historical recreational landscape

103



UNION BAY



Values	Theme	Resource Type / Description
<ul style="list-style-type: none"> · Provides historical context for Cumberland, and its industrial history · Name ties bay with coal mines of Union · The port for shipment of Union coal 	<ul style="list-style-type: none"> · Mining Coal, Cutting Wood · Developing A Village 	<ul style="list-style-type: none"> · Associated landscape

104



**LITTLE JERUSALEM
(DERWENT AVENUE)**

Values	Theme	Resource Type / Description
<ul style="list-style-type: none"> · Example of early residential development · Example of culturally diverse population (Jewish citizen engaging in land development) 	<ul style="list-style-type: none"> · Developing A Village · Creating a Diverse Community 	<ul style="list-style-type: none"> · Urban landscape

105



THE HEIGHTS

Values	Theme	Resource Type / Description
<ul style="list-style-type: none"> · Area of town valued for views over the Comox Valley 	<ul style="list-style-type: none"> · Developing A Village 	<ul style="list-style-type: none"> · Urban landscape

106



VILLAGE SQUARE

Values	Theme	Resource Type / Description
<ul style="list-style-type: none"> Public space at the heart of the commercial portion of Dunsmuir Avenue Old gas station property repurposed for park and gathering place 	<ul style="list-style-type: none"> Developing A Village Quiet Life, Active Pursuits 	<ul style="list-style-type: none"> Urban landscape

107



JAPANESE HILL SITE

Values	Theme	Resource Type / Description
<ul style="list-style-type: none"> Historic pattern of settlement 	<ul style="list-style-type: none"> Developing A Village Creating a Diverse Community 	<ul style="list-style-type: none"> Urban landscape

108



OLD GOVERNMENT PRECINCT WITH HOSPITAL

Values	Theme	Resource Type / Description
<ul style="list-style-type: none"> Continued use of the site for hospital use since laying out of townsite 	<ul style="list-style-type: none"> Developing A Village 	<ul style="list-style-type: none"> Institutional landscape

109



AREAS WITH RURAL CHARACTER

Values	Theme	Resource Type / Description
<ul style="list-style-type: none"> Important for Cumberland's residents sense of quiet life 	<ul style="list-style-type: none"> Quiet Life, Active Pursuits Developing A Village 	<ul style="list-style-type: none"> Rural landscape

110



**VLA DEVELOPMENTS ON PENWITH AND MARYPORT STREETS
post First World War**

Values	Theme	Resource Type / Description
<ul style="list-style-type: none"> Part of history of residential development in the old residential neighbourhoods 	<ul style="list-style-type: none"> Developing A Village 	<ul style="list-style-type: none"> Urban landscape

111



**BEVAN
(OUTSIDE CUMBERLAND)**

Values	Theme	Resource Type / Description
<ul style="list-style-type: none"> Important remnant of the history of settlement of the Cumberland region Historic connection with Cumberland miners working in No.7 and No.8 Mines in Bevan Many Bevan houses relocated to old neighbourhoods of Cumberland 	<ul style="list-style-type: none"> Mining Coal, Cutting Wood Developing A Village 	<ul style="list-style-type: none"> Associated landscape

112



ROYSTON

Values	Theme	Resource Type / Description
<ul style="list-style-type: none"> · Important remnant of the history of mining and settlement in the Cumberland region · Important association with the Japanese Canadian community in the Cumberland region · Cumberland's connection with the sea 	<ul style="list-style-type: none"> · Mining Coal, Cutting Wood · Creating a Diverse Community 	<ul style="list-style-type: none"> · Location of historical mining site, village and associated landscape

113



42ND STREET SUBDIVISION

Values	Theme	Resource Type / Description
<ul style="list-style-type: none"> · Important remnant of the history of settlement of the Cumberland region · Historical growth and development of the Village through new areas and subdivisions 	<ul style="list-style-type: none"> · Developing a Village · Creating a Diverse Community 	<ul style="list-style-type: none"> · Subdivision, streetscapes and houses

Artifacts

114



STEAM DONKEYS, CABLES, BRIDGE FOOTINGS

Values	Theme	Resource Type / Description
<ul style="list-style-type: none"> Unique remnants of the mining and logging economy 	<ul style="list-style-type: none"> Mining Coal, Cutting Wood 	<ul style="list-style-type: none"> Industrial artifacts

115



COAL MINING ARTIFACTS: SLAG PILES, RAILWAY TRACKS

Values	Theme	Resource Type / Description
<ul style="list-style-type: none"> Unique remnants of the mining and logging economy 	<ul style="list-style-type: none"> Mining Coal, Cutting Wood 	<ul style="list-style-type: none"> Industrial artifacts

116



WATERWORKS

Values	Theme	Resource Type / Description
<ul style="list-style-type: none"> Important as example of early industrial and settlement infrastructure 	<ul style="list-style-type: none"> Mining Coal, Cutting Wood Developing A Village 	<ul style="list-style-type: none"> Industrial Infrastructure

117



INTERPRETIVE SIGNS IN CHINATOWN

Values	Theme	Resource Type / Description
<ul style="list-style-type: none"> Landscape is a major contributor to the character of Cumberland's residential areas 	<ul style="list-style-type: none"> Creating a Diverse Community 	<ul style="list-style-type: none"> Urban landscape

118



CAIRNS: JAPANESE CANADIAN, BLACK AND CHINESE COMMUNITIES, and NO.4 MINE CAIRN

Values	Theme	Resource Type / Description
<ul style="list-style-type: none"> Landscape is a major contributor to the character of Cumberland's residential areas 	<ul style="list-style-type: none"> Creating a Diverse Community 	<ul style="list-style-type: none"> Urban landscape

119



SANDWICH BOARDS

Values	Theme	Resource Type / Description
<ul style="list-style-type: none"> Valued for being a sign of small independent commercial life on Dunsmuir Avenue 	<ul style="list-style-type: none"> Quiet Life, Active Pursuits Developing A Village 	<ul style="list-style-type: none"> Urban landscape

120



ELECTRIC LIGHT COMPANY STRUCTURES

Values	Theme	Resource Type / Description
<ul style="list-style-type: none"> Part of settlement infrastructure 	<ul style="list-style-type: none"> Developing A Village 	<ul style="list-style-type: none"> Urban landscape structure

121



ORIGINAL ROLLING STOCK

Values	Theme	Resource Type / Description
<ul style="list-style-type: none"> Rare remaining engines exist outside of the region in the Snoqualmie Railway Museum Important artifacts that recall the railroad and industrial history of Cumberland 	<ul style="list-style-type: none"> Mining Coal, Cutting Wood 	<ul style="list-style-type: none"> Railway artifacts

Rituals, Events, Intangibles

122



MOUNTAIN BIKE RACES

Values	Theme	Resource Type / Description
<ul style="list-style-type: none"> · Important as a community recreational pursuit · Engine of contemporary economy · Adaptive re-use of logging and mining roads 	<ul style="list-style-type: none"> · Quiet Life, Active Pursuits 	<ul style="list-style-type: none"> · Community Activity

123



PARADES AND PAGEANTS

Values	Theme	Resource Type / Description
<ul style="list-style-type: none"> · Long history of Empire Days · One of the oldest May Day parades in Canada · Remembrance of community festivals and event that communicated community identity and pride 	<ul style="list-style-type: none"> · Quiet Life, Active Pursuits · Creating a Diverse Community 	<ul style="list-style-type: none"> · Community Activity

124



WASHOE AND HORSESHOES TOURNAMENT

Values	Theme	Resource Type / Description
<ul style="list-style-type: none"> · Recent, enduring community event that underscores local community pride 	<ul style="list-style-type: none"> · Quiet Life, Active Pursuits 	<ul style="list-style-type: none"> · Community Activity

125



WORKERS' DAY BEAN SUPPER

Values	Theme	Resource Type / Description
<ul style="list-style-type: none"> Recent tradition that underscores local community pride in the worker history of Cumberland 	<ul style="list-style-type: none"> Quiet Life, Active Pursuits 	<ul style="list-style-type: none"> Community Activity

126



FIREFIGHTERS

Values	Theme	Resource Type / Description
<ul style="list-style-type: none"> Community pride Historical importance given to local volunteerism 	<ul style="list-style-type: none"> Governing Change 	<ul style="list-style-type: none"> Community service

127



EASTER EGG HUNT (No.6 MINE PARK)

Values	Theme	Resource Type / Description
<ul style="list-style-type: none"> Enduring community event that underscores local community connections and pride 	<ul style="list-style-type: none"> Quiet Life, Active Pursuits 	<ul style="list-style-type: none"> Community Activity

128



OLDTIMERS SOCCER GAME

Values	Theme	Resource Type / Description
<ul style="list-style-type: none"> Enduring community event that underscores local community connections and pride Cumberland team important part of recreational life for miners Team was a prominent on the Vancouver Island circuit 	<ul style="list-style-type: none"> Quiet Life, Active Pursuits 	<ul style="list-style-type: none"> Community Activity

129



FESTIVALS

Values	Theme	Resource Type / Description
<ul style="list-style-type: none"> Valued for the ongoing renewal of local interest and community connections 	<ul style="list-style-type: none"> Quiet Life, Active Pursuits 	<ul style="list-style-type: none"> Community Activity

130

1) **ATMOSPHERE GATHERING:**



RETURN OF LIVE THEATRE

Values	Theme	Resource Type / Description
<ul style="list-style-type: none"> Valued for the renewal of local interest, community connections and artists Part of regional connection with Courtney 	<ul style="list-style-type: none"> Developing A Village 	<ul style="list-style-type: none"> Urban landscape

131



CUMBERLAND LAKE DAYS

Values	Theme	Resource Type / Description
<ul style="list-style-type: none"> Valued for the ongoing community recreational life 	<ul style="list-style-type: none"> Developing A Village 	<ul style="list-style-type: none"> Urban landscape

132



HERITAGE FAIRE

Values	Theme	Resource Type / Description
<ul style="list-style-type: none"> Valued for the renewal of community craftsmen and artists 	<ul style="list-style-type: none"> Developing A Village 	<ul style="list-style-type: none"> Urban landscape

133



LUCKY LAGER

Values	Theme	Resource Type / Description
<ul style="list-style-type: none"> Local pride in community social pattern Associated with pride of Cumberland at one time being the highest per capita consumers of Lucky Lager beer 	<ul style="list-style-type: none"> Quiet Life, Active Pursuits 	<ul style="list-style-type: none"> Community Activity

134



BOAT TRAFFIC ON COMOX LAKE

Values	Theme	Resource Type / Description
<ul style="list-style-type: none"> Important example of enduring on community recreational life 	<ul style="list-style-type: none"> Quiet Life, Active Pursuits 	<ul style="list-style-type: none"> Recreational Activity

135



MINERS' MEMORIAL WEEKEND

Values	Theme	Resource Type / Description
<ul style="list-style-type: none"> Honouring the mining history of Cumberland, and miners' stories 	<ul style="list-style-type: none"> Quiet Life, Active Pursuits 	<ul style="list-style-type: none"> Community Activity

136



VALENTINE'S DAY

Values	Theme	Resource Type / Description
<ul style="list-style-type: none"> Enduring special day in the community 	<ul style="list-style-type: none"> Quiet Life, Active Pursuits 	<ul style="list-style-type: none"> Community Activity

137



TRIVIA NIGHT

Values	Theme	Resource Type / Description
<ul style="list-style-type: none"> Enduring social event in the community, used as a fundraiser for the Community Forest 	<ul style="list-style-type: none"> Quiet Life, Active Pursuits 	<ul style="list-style-type: none"> Community Activity

138



CULTURAL TRADITIONS

Values	Theme	Resource Type / Description
<ul style="list-style-type: none"> Pride in the local culture Contributes to unique identity of Cumberland 	<ul style="list-style-type: none"> Quiet Life, Active Pursuits 	<ul style="list-style-type: none"> Community Activities

139



FALL FAIR, HOME AND GARDEN SHOW

Values	Theme	Resource Type / Description
<ul style="list-style-type: none"> Pride in the local culture Contributes to unique identity of Cumberland Connection to fundraising for locally important causes 	<ul style="list-style-type: none"> Quiet Life, Active Pursuits 	<ul style="list-style-type: none"> Community Activity

140



PLACE NAMES FROM ENGLAND'S LAKE DISTRICT

Values	Theme	Resource Type / Description
<ul style="list-style-type: none"> Displays newcomers' ethnic roots Mark historical uses (e.g. Camp Road) 	<ul style="list-style-type: none"> Developing A Village 	<ul style="list-style-type: none"> Urban landscape

141



CUMBERLAND VILLAGE WORKS

Values	Theme	Resource Type / Description
<ul style="list-style-type: none"> Community initiative 	<ul style="list-style-type: none"> Developing A Village Governing Change 	<ul style="list-style-type: none"> Urban landscape

142



CUMBERLAND CULTURE AND ARTS SOCIETY

Values	Theme	Resource Type / Description
<ul style="list-style-type: none"> Valued as ongoing local interest in the local cultural and artistic community 	<ul style="list-style-type: none"> Quiet Life, Active Pursuits 	<ul style="list-style-type: none"> Community Activities

143



WAVERLY HOTEL SHOWS

Values	Theme	Resource Type / Description
<ul style="list-style-type: none"> Valued as ongoing local interest in the local cultural and artistic community 	<ul style="list-style-type: none"> Quiet Life, Active Pursuits 	<ul style="list-style-type: none"> Community Activity

144



HALLOWE'EN, SANTA'S BREAKFAST, THUNDERBALLS, BINGO

Values	Theme	Resource Type / Description
<ul style="list-style-type: none"> Enduring special days and events in the community calendar 	<ul style="list-style-type: none"> Quiet Life, Active Pursuits 	<ul style="list-style-type: none"> Community Activity

145



BEAUTIFULLY AGING MATERIAL

Values	Theme	Resource Type / Description
<ul style="list-style-type: none"> Important sign of the age of community development Physical beauty of weathered traditional building material and naturalized landscapes 	<ul style="list-style-type: none"> Quiet Life, Active Pursuits Developing A Village 	<ul style="list-style-type: none"> Urban landscape

146



CASUAL WALKING DOWN THE MIDDLE OF THE STREET

Values	Theme	Resource Type / Description
<ul style="list-style-type: none">· Value of slow pace of life in the quiet town· More possible decades ago, before increase in vehicle traffic	<ul style="list-style-type: none">· Quiet Life, Active Pursuits· Developing A Village	<ul style="list-style-type: none">· Urban landscape

Art, Craft and Heritage

147



MURALS AND GRAFFITI

Values	Theme	Resource Type / Description
<ul style="list-style-type: none"> Remembrance of historical advertising and messaging on building elevations 	<ul style="list-style-type: none"> Developing A Village 	<ul style="list-style-type: none"> Urban landscape

148



CUMBERLAND MUSEUM

Values	Theme	Resource Type / Description
<ul style="list-style-type: none"> Repository of valued artifacts of Cumberland 	<ul style="list-style-type: none"> Developing A Village 	<ul style="list-style-type: none"> Repository for historical artifacts

149



PEOPLES' STORIES – JAPANESE AND CHINESE COMMUNITIES

Values	Theme	Resource Type / Description
<ul style="list-style-type: none"> Important record of the ethnically diverse early Cumberland society, and the challenges facing these communities in early newcomer culture 	<ul style="list-style-type: none"> Developing A Village Creating a Diverse Community 	<ul style="list-style-type: none"> Recorded History

150



ARTISTIC ENDEAVORS

Values	Theme	Resource Type / Description
<ul style="list-style-type: none"> Valued aspect of local culture and community 	<ul style="list-style-type: none"> Quiet Life, Active Pursuits Creating a Diverse Community 	<ul style="list-style-type: none"> Cultural activities

151



STORIES OF RECREATION AND GREAT ATHLETES

Values	Theme	Resource Type / Description
<ul style="list-style-type: none"> Part of community pride 	<ul style="list-style-type: none"> Quiet Life, Active Pursuits Creating a Diverse Community 	<ul style="list-style-type: none"> Recorded History

152



**RE-WILDING PLACES
(e.g. CHINATOWN)**

Values	Theme	Resource Type / Description
<ul style="list-style-type: none"> Part of the unique contemporary community culture of Cumberland Integrating contemporary and historical connections with the landscape Example: Chinatown was built on a beaver swamp; beaver swamp returning 	<ul style="list-style-type: none"> Land of Plenty Quiet Life, Active Pursuits Developing A Village 	<ul style="list-style-type: none"> Urban landscape

153



TRADITIONAL ARTS AND CULTURE

Values	Theme	Resource Type / Description
<ul style="list-style-type: none"> · Landscape is a major contributor to the character of Cumberland's residential areas 	<ul style="list-style-type: none"> · Quiet Life, Active Pursuits · Creating a Diverse Community 	<ul style="list-style-type: none"> · Cultural activities

154



HISTORICAL PHOTOGRAPHS OF PAST EVENTS

Values	Theme	Resource Type / Description
<ul style="list-style-type: none"> · Important connection to past events that have shaped the contemporary town and community 	<ul style="list-style-type: none"> · Quiet Life, Active Pursuits · Creating a Diverse Community 	<ul style="list-style-type: none"> · Recorded history

155



STREET PENNANTS

Values	Theme	Resource Type / Description
<ul style="list-style-type: none"> · Traditional part of reinforcing Dunsmuir Avenue as the physical central space of the community 	<ul style="list-style-type: none"> · Quiet Life, Active Pursuits · Developing A Village 	<ul style="list-style-type: none"> · Historical urban landscape feature

156



FICTION AND NON-FICTION BOOKS

Values	Theme	Resource Type / Description
<ul style="list-style-type: none">· Culturally significant artifacts reinforcing story of the community	<ul style="list-style-type: none">· Creating a Diverse Community	<ul style="list-style-type: none">· Cultural history artifacts

People

157



GINGER GOODWIN, AND THE BEGINNING OF THE LABOUR MOVEMENT

Values	Theme	Resource Type / Description
<ul style="list-style-type: none"> Part of the pride in the mining history Pride in the history of fighting for miners' rights 	<ul style="list-style-type: none"> Creating a Diverse Community 	<ul style="list-style-type: none"> Historical figure

158



JOE NAYLOR

Values	Theme	Resource Type / Description
<ul style="list-style-type: none"> Pride in the mining history Pride in the history of fighting for miners' rights 	<ul style="list-style-type: none"> Creating a Diverse Community 	<ul style="list-style-type: none"> Historical figure

159



PIONEER FAMILIES

Values	Theme	Resource Type / Description
<ul style="list-style-type: none"> Locally prominent families with a history reaching back to the original pioneer settlement of the area 	<ul style="list-style-type: none"> Creating a Diverse Community 	<ul style="list-style-type: none"> Historical figures

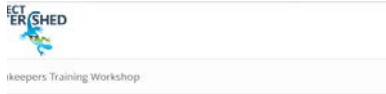
160



TREE PLANTING COMMUNITY

Values	Theme	Resource Type / Description
<ul style="list-style-type: none"> Pride in the contribution to the post-1970s Cumberland culture of Cumberland 	<ul style="list-style-type: none"> Mining Coal, Cutting Wood Creating a Diverse Community 	<ul style="list-style-type: none"> Active community

161



STREAMKEEPERS GROUP



Values	Theme	Resource Type / Description
<ul style="list-style-type: none"> Local importance, reflecting contemporary values for the natural history of the Cumberland area 	<ul style="list-style-type: none"> Quiet Life, Active Pursuits Creating a Diverse Community 	<ul style="list-style-type: none"> Active community

162



FREEMASONS, ORDER OF THE EASTERN STAR, ROTARY CLUB, AND OTHER SERVICE CLUBS

Values	Theme	Resource Type / Description
<ul style="list-style-type: none"> Important legacies of community volunteerism and local initiatives 	<ul style="list-style-type: none"> Creating a Diverse Community 	<ul style="list-style-type: none"> Historical community